

# MOTO-TOTE<sup>®</sup>

Motorcycle carriers

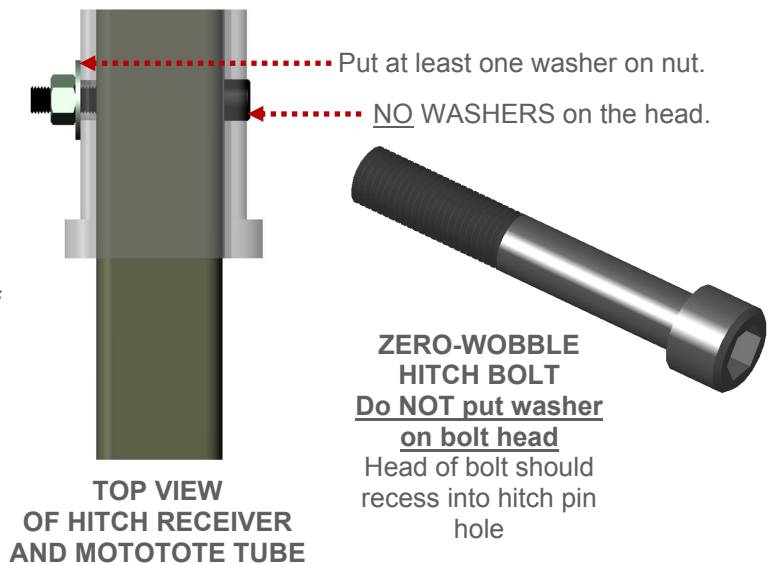
## **MTHB** Zero-Wobble Bolt:

For use with all Moto-Tote carriers manufactured after 2003.

Attach the MotoTote carrier to the vehicle hitch receiver with the Zero-Wobble hitch bolt, washer and nut as shown here. Do not put a washer at the bolt head. The bolt head should be recessed into the receiver hole and resting against the square tube of the MotoTote carrier as shown.

Tighten until the connection between the MotoTote and vehicle is solid with no play. Do not over-tighten.

Please send questions or feedback to [questions@mototote.com](mailto:questions@mototote.com)



MOTO-TOTE is a registered trademark of D&D Design, Inc.  
Patent #D393241

by *D&D Design, Inc.*

**For more information, call (888) 333-4621 or visit [MOTOTOTE.com](http://MOTOTOTE.com)**

Revised 4-15-2011 Copyright 2011 D&D Design, Inc., Moto-Tote Motorcycle Carriers, [www.MotoTote.com](http://www.MotoTote.com) All rights reserved